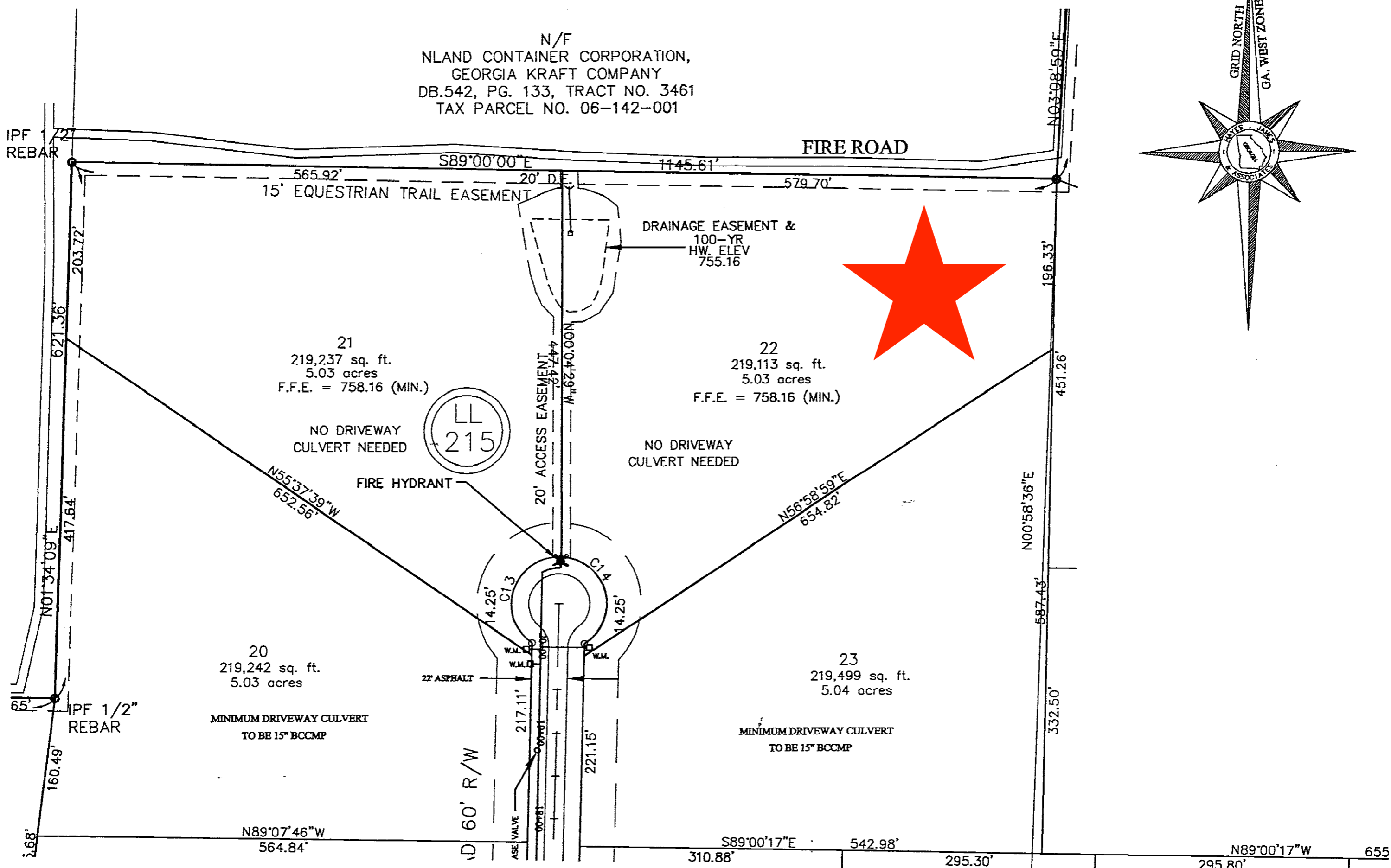


N/F  
 NLAND CONTAINER CORPORATION,  
 GEORGIA KRAFT COMPANY  
 DB.542, PG. 133, TRACT NO. 3461  
 TAX PARCEL NO. 06-142-001



**ENGINEER:**

J. CHRIS LAWLER, P.E.  
 HAYES, JAMES & ASSOCIATES, INC.  
 1009 N. TENNESSEE ST.  
 CARTERSVILLE, GA 30120  
 (770) 382-9611

**SURVEYOR:**

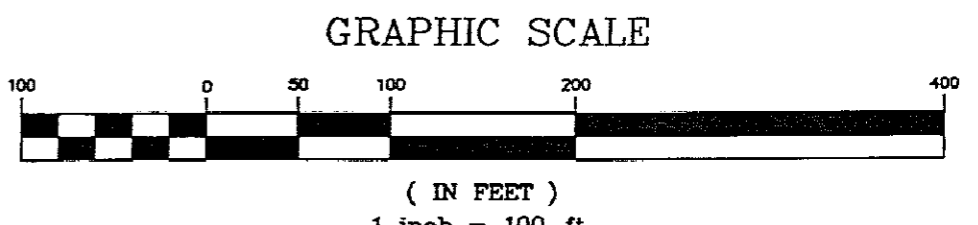
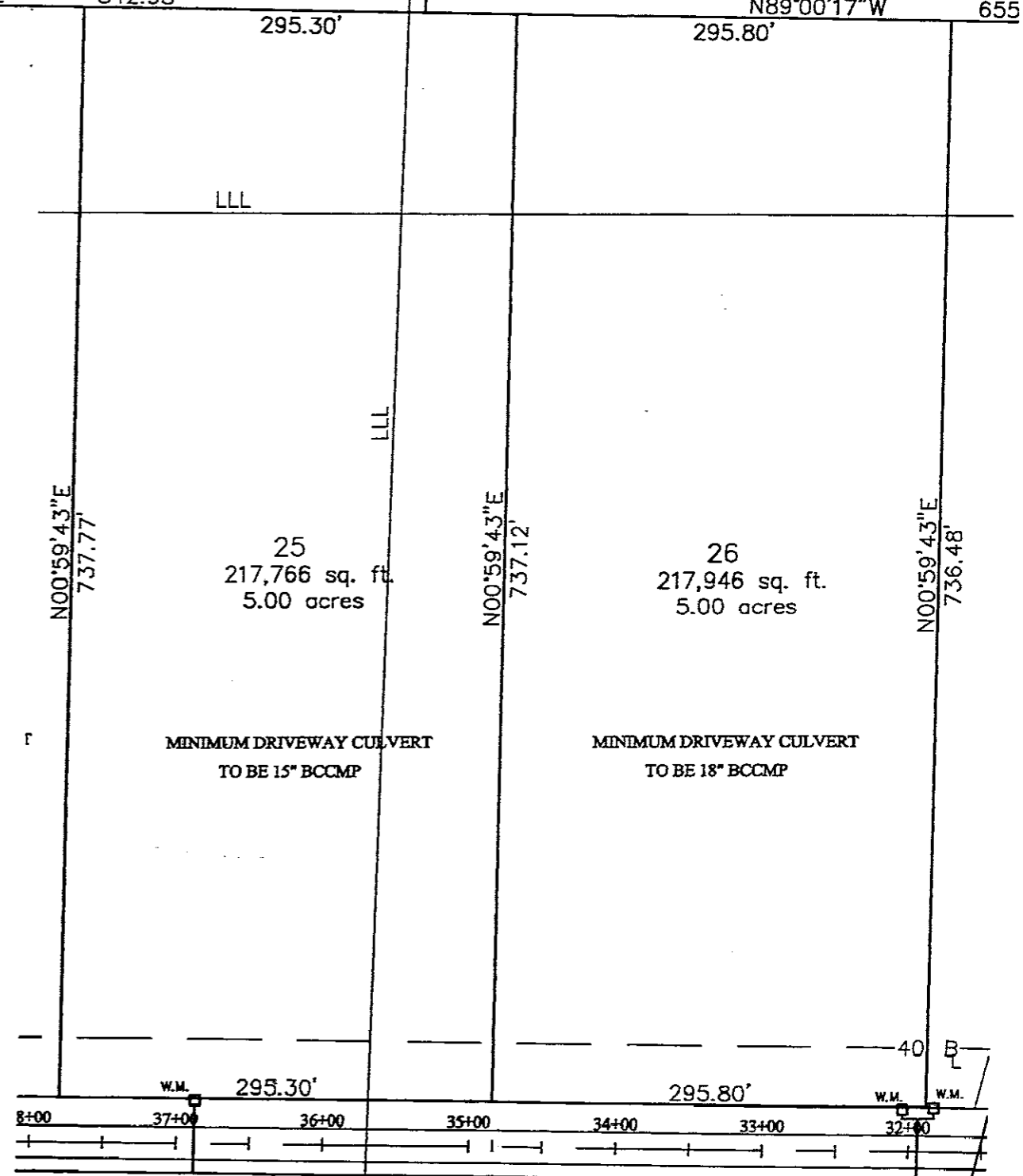
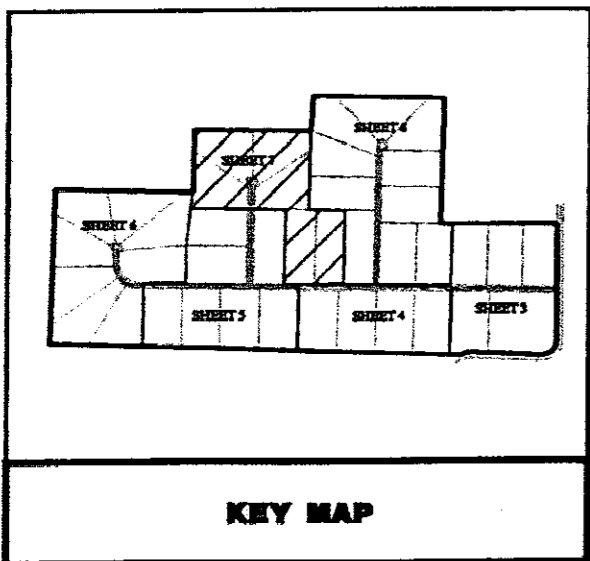
BRENDAN R. BLAKE, P.E., P.L.S.  
 HAYES, JAMES & ASSOCIATES, INC.  
 1009 N. TENNESSEE ST.  
 CARTERSVILLE, GA 30120  
 (770) 382-9611

**LEGEND**

- IPF = IRON PIN FOUND (●)
- IPS = IRON PIN SET (○)
- CMF = CONCRETE MONUMENT FOUND (◻)
- OMS = CONCRETE MONUMENT SET (◻)
- R/W = RIGHT OF WAY
- STA = STATION NUMBER
- LLL = LAND LOT LINE
- C/L = CENTERLINE
- P/L = PROPERTY LINE
- BM = BENCHMARK
- PT = POINT OF TANGENCY
- PC = POINT OF CURVATURE
- IE = INVERT ELEVATION
- EL = ELEVATION (ELEV.)
- B/L = BUILDING LINE
- R = RADIUS
- FFE = FINISHED FLOOR ELEVATION
- = FLOW
- = PROPERTY CORNER
- X- = FENCE
- ⊙ = POLE
- T- = TELEPHONE LINE
- TV- = TELEVISION LINE
- P- = POWER LINE
- S- = SANITARY SEWER LINE
- SSE = SANITARY SEWER EASEMENT
- MH = MANHOLE
- G- = GAS LINE
- W- = WATER LINE
- ⊕ = PLUGGED STUB
- ⊕ = GATE VALVE
- F.H. = EXIST. FIRE HYDRANT (●)
- F.H. = PROP. FIRE HYDRANT (●)
- W.M. = WATER METER (⊙)
- ST- = STORM SEWER LINE
- YI = YARD INLET
- DI = DROP INLET
- CB = CATCH BASIN
- HW = HEAD WALL (—)
- JB = JUNCTION BOX
- DE = DRAINAGE EASEMENT
- FM = SEWER FORCE MAIN
- DS = DOWNSPOUT
- CO = CLEAN OUT
- OMP = CORRUGATED METAL PIPE
- RCP = REINFORCED CONCRETE PIPE
- VCP = VITRIFIED CLAY PIPE
- DIP = DUCTILE IRON PIPE
- PVC = POLYVINYL CHLORIDE PIPE
- C & G = CURB AND GUTTER
- F.I.R.M. = FEDERAL INSURANCE RATE MAP
- T.P.O.B. = TRUE POINT OF BEGINNING
- P.O.B. = POINT OF BEGINNING
- QAD = GA. MILITIA DISTRICT
- = TREE LINE
- = RIPRAP
- = BRANCH
- = EXISTING CONTOURS (DASHED)
- 912- = PROPOSED CONTOURS (SOLID)
- TC = TOP OF CURB ELEVATION
- ▲ = TRAVERSE POINT
- L.P. = LIGHT POLE (⊙)
- ⊙ = PLANTED TREE
- MT ⊙ = MARKED TREE
- ### = STREET ADDRESS

GEORGIA, BARTOW COUNTY  
 CLERK'S OFFICE SUPERIOR COURT  
 Filed for record this 27th day of  
 May 2008 at 3:05 o'clock P.M.  
 Recorded in Plat Book No. 53  
 Page 356 of this  
 GARY BELL, Clerk

**APPROVED**  
 BARTOW COUNTY  
 ZONING ADMINISTRATOR



8	RD	L
SHEET 7 OF 8		
VIEW: MODEL		
LM		
PROJECT NO. 01192e		
FILE NO.		

ISSUE						
NO.	DESCRIPTION	DATE	BY	APPR.		
A	COUNTY SUBMITTAL	4/23/04	TMR	BRB		
B	COUNTY COMMENTS	5/10/04	TMR	BRB		
C	ADDITIONAL COMMENTS	5/20/04	TMR	BRB		
DISTRICT: 17b						
SECTION: 3rd						
COUNTY: BARTOW						
DESIGNED: TMR DRAWN: TMR						
CHECKED: BRB APPROVED: BRB						



FINAL PLAT  
 FOR  
 THE DERBY  
 BARTOW COUNTY, GEORGIA

**HAYES, JAMES & ASSOCIATES**  
 CONSULTING ENGINEERS, PLANNERS & SURVEYORS  
 CARTERSVILLE, GEORGIA  
 770-382-9611