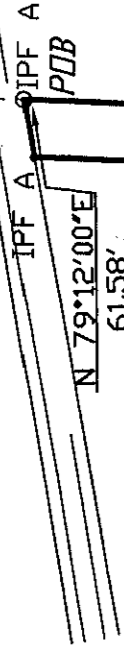


OLD ALABAMA ROAD 50' R/W



N 79°12'00"E
61.58'

L.L. 1060

L.L. 1059

APPROXIMATE LAND LOT LINE

****SURVEYOR'S CERTIFICATION****

It is hereby certified that this plat is true and correct and was prepared from an actual survey by me or under my supervision; that all monuments shown thereon actually exist and their size, type, and shape are correctly shown. The field data upon which this plat is based was collected using a 5 second electronic total station theodolite and has a closure precision of one foot in 17,500 feet and an angular closure of 06 seconds per angle point, and was adjusted using the compass rule. This plat has been calculated for closure and found to be accurate within one foot in +200,000 feet.

By Paul R. Rogers

Registered Land Surveyor No. 2303

1/2 INCH REBAR SET AT ALL CORNERS UNLESS NOTED.

- **LEGEND****
- IP S IRON PIN SET
 - IP F IRON PIN FOUND
 - IP F A 1/2" REBAR FOUND
 - FC FENCE CORNER
 - X- FENCE
 - LL LAND LOT
 - CL CENTERLINE
 - R/W RIGHT-OF-WAY
 - N/F NOW OR FORMERLY
 - DB DEED BOOK
 - PB PLAT BOOK
 - POB POINT OF BEGINNING
 - PP POWER POLE
 - OHUL OVERHEAD UTILITY LINE

APPROXIMATE LAND LOT LINE

IP F A

N 79°19'08"E
397.31'

N 02°10'01"E
439.66'

N/F CROWE

N 79°59'00"E
400.06'

IP F A

APPROXIMATE LAND LOT LINE

L.L. 1101

L.L. 1102

L.L. 1132

L.L. 1131

33.26 AC

N 02°10'01"E 1207.77'

N/F WORLEY

N 82°44'00"W
56.79'

EUHARLEE CREEK
CENTER OF CREEK IS PROPERTY LINE

194.23'
N 71°20'00"W

N 46°30'00"W
441.38'



Scale 1" = 200'

GEORGIA, BARTOW COUNTY
CLERKS OFFICE SUPERIOR COURT

Filed for record this 27th day of

April 2007 at 4:05 o'clock P.M.

Record in Plat record No. 28

Page 85 this April 20 07

GARY BELL, Clerk



11/10/07

SURVEY FOR
DOUG HERNDON

LOCATED IN LAND LOTS 1060,
1101 & 1132

17th DISTRICT, 3rd SECTION
BARTOW COUNTY, GEORGIA

DATE OF FIELDWORK: JULY 03, 2005

DATE OF PLAT: JANUARY 10, 2007

JOB NO. 05175remains

RHODES ENGINEERING SERVICES, INC
A CIVIL ENGINEERS AND LAND SURVEYORS

645 HENDERSON DRIVE, SUITE 2

CARTERSVILLE, GA 30120

PHONE 770-386-7616 FAX 770-386-7617