

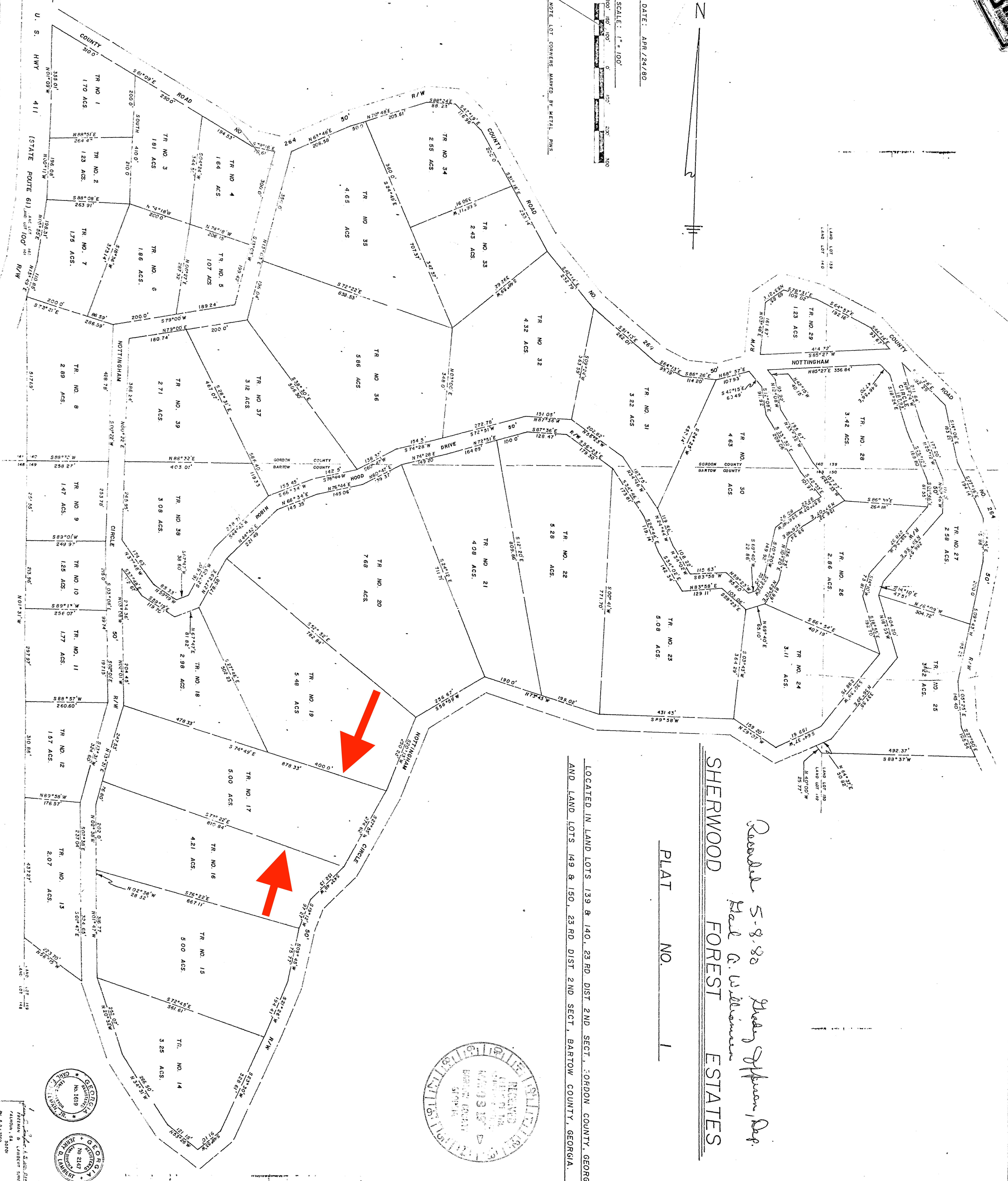
U.S. DEPT. OF THE INTERIOR



DATE: APR/24/80

SCALE: 1" = 100'
0 100 200 300 400 500

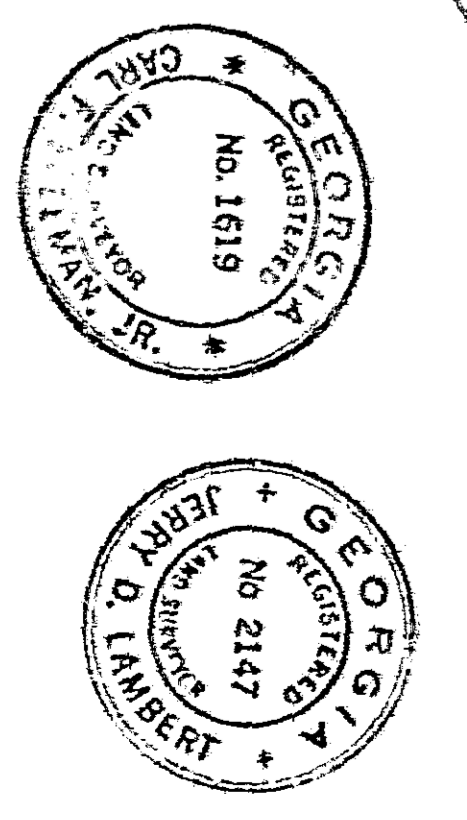
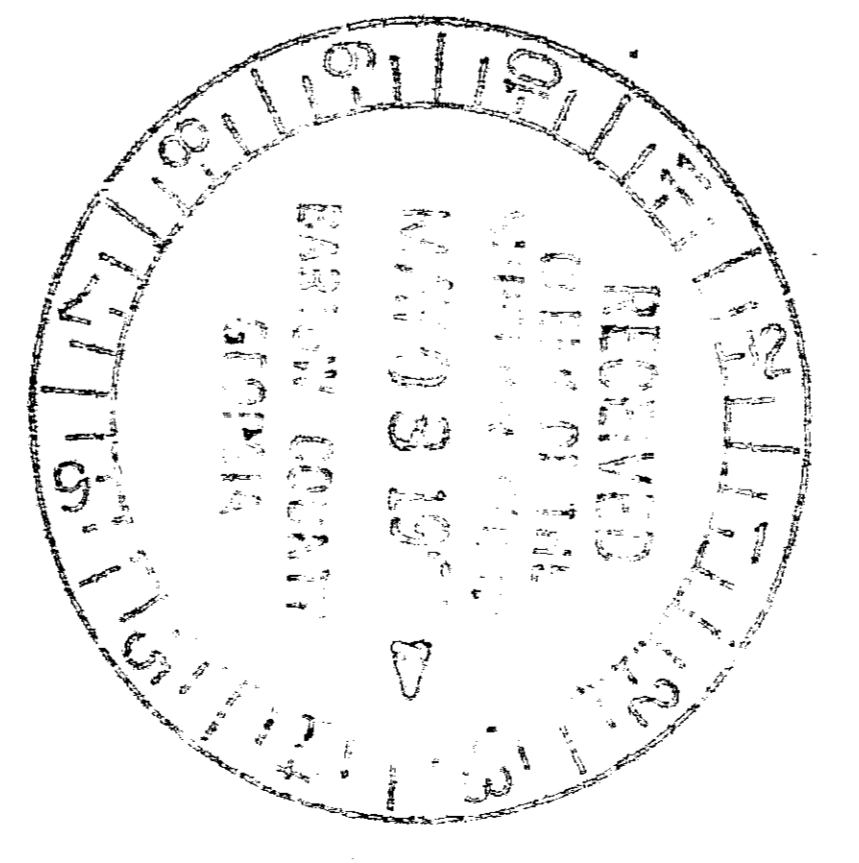
NOTE: LOT CORNERS MARKED BY METAL PINS



Revised 5-8-80
Paul G. Williamson, Dep.
SHERWOOD FOREST ESTATES

PLAT NO. 1

LOCATED IN LAND LOTS 139 & 140, 23 RD DIST 2ND SECT., GORDON COUNTY, GEORGIA
AND LAND LOTS 149 & 150, 23 RD DIST 2ND SECT., BARTOW COUNTY, GEORGIA.



W. S. WILSON & SONS, INC.
FALCON, GA 30750
M. R. 200