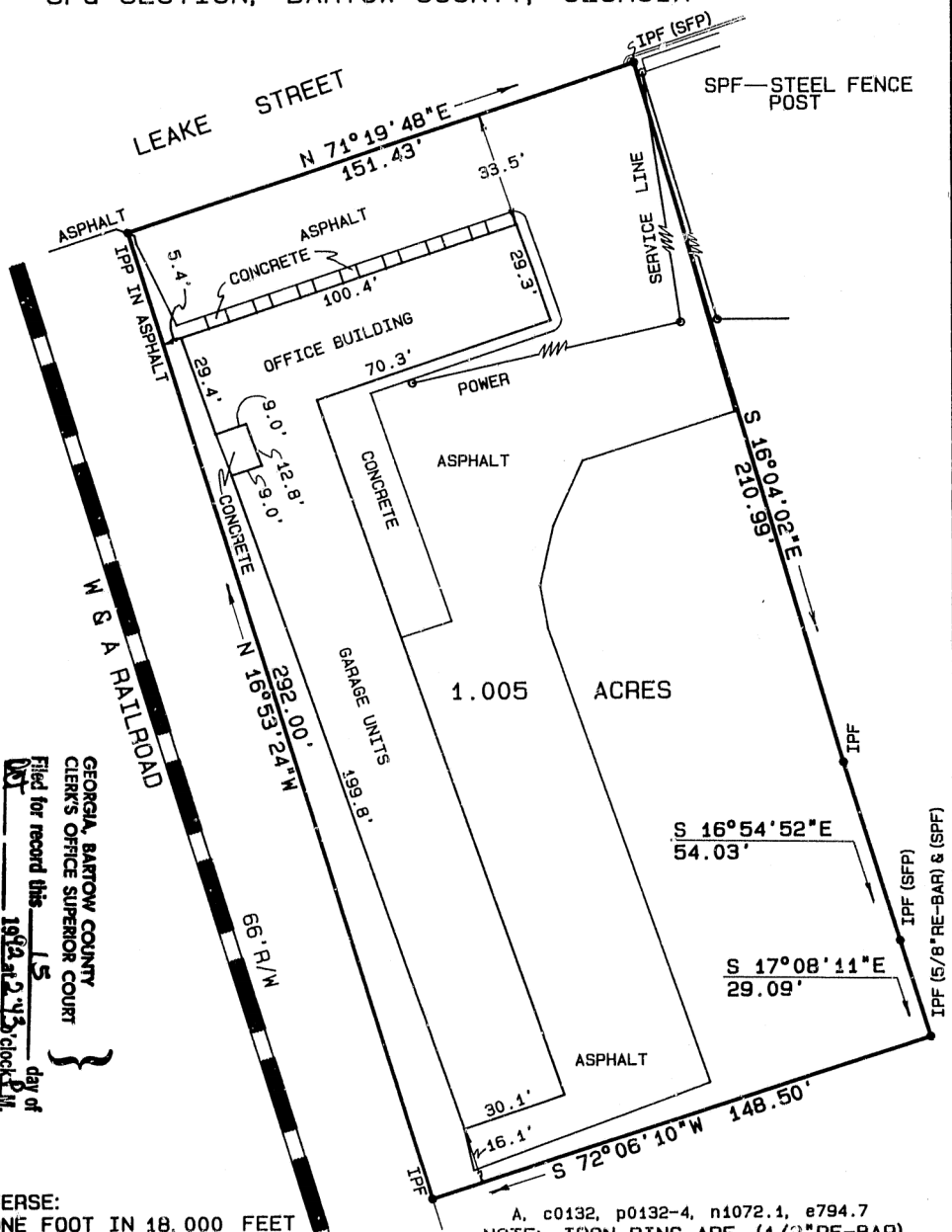


SURVEY FOR
RICHARD C. KEITH & SUE C. KEITH
 LOTS 19, 20, 21, & 22, AND PART OF LOT 18,
 CAR FACTORY SURVEY
 IN THE CITY OF CARTERSVILLE
 IN LAND LOT 482, 4th DISTRICT,
 3rd SECTION, BARTOW COUNTY, GEORGIA



GEORGIA, BARTOW COUNTY
 CLERK'S OFFICE SUPERIOR COURT
 Filed for record this 15 day of Oct
 1992 at 2:43 o'clock P.M.
 Recorded in Plat record No. 35
 Page 159 this 16 day of Oct
 1992
 GRADY JEFFERSON, Clerk

FIELD TRAVERSE:
 CLOSURE; ONE FOOT IN 18,000 FEET
 USING A LIETZ SET 3.
 ANGULAR ERROR; 0°00'05" PER ANGLE
 POINT USING A LIETZ SET 3.
 ADJUSTED; USING THE COMPASS RULE.

SMITH & SMITH LAND SURVEYORS, P.C.
 SURVEYORS & ENGINEERS
 2 SOUTH AVENUE, CARTERSVILLE, GA. 30120
 PHONE 404-382-0457

A. Lee Smith

REGISTERED LAND SURVEYOR No. 1309

A. c0132, p0132-4, n1072.1, e794.7
 NOTE: IRON PINS ARE (1/2" RE-BAR)
 EXCEPT AS SHOWN.

FLOOD HAZARD BOUNDARY MAP 0089 F
 DATED SEPT. 29, 1989 SHOWS THIS
 PROPERTY IS NOT IN A FLOOD ZONE.

PLAT CLOSURE;
 ONE FOOT IN
 158,000 FEET.
 SEPTEMBER 23, 1992



MAG. NORTH

R/W — RIGHT OF WAY	R — RADIUS
IPP — IRON PIN PLACED	* — * — FENCE
IPF — IRON PIN FOUND	--- — LAND LOT LINE
CM — CONCRETE MARKER	⊕ — CENTER LINE
CH. — CHORD	— — POWER LINE
L — LENGTH OF CURVE	

0 8' 40'
 4' 20' 60'
 SCALE 1" = 40'
 FILE 0132-4 A