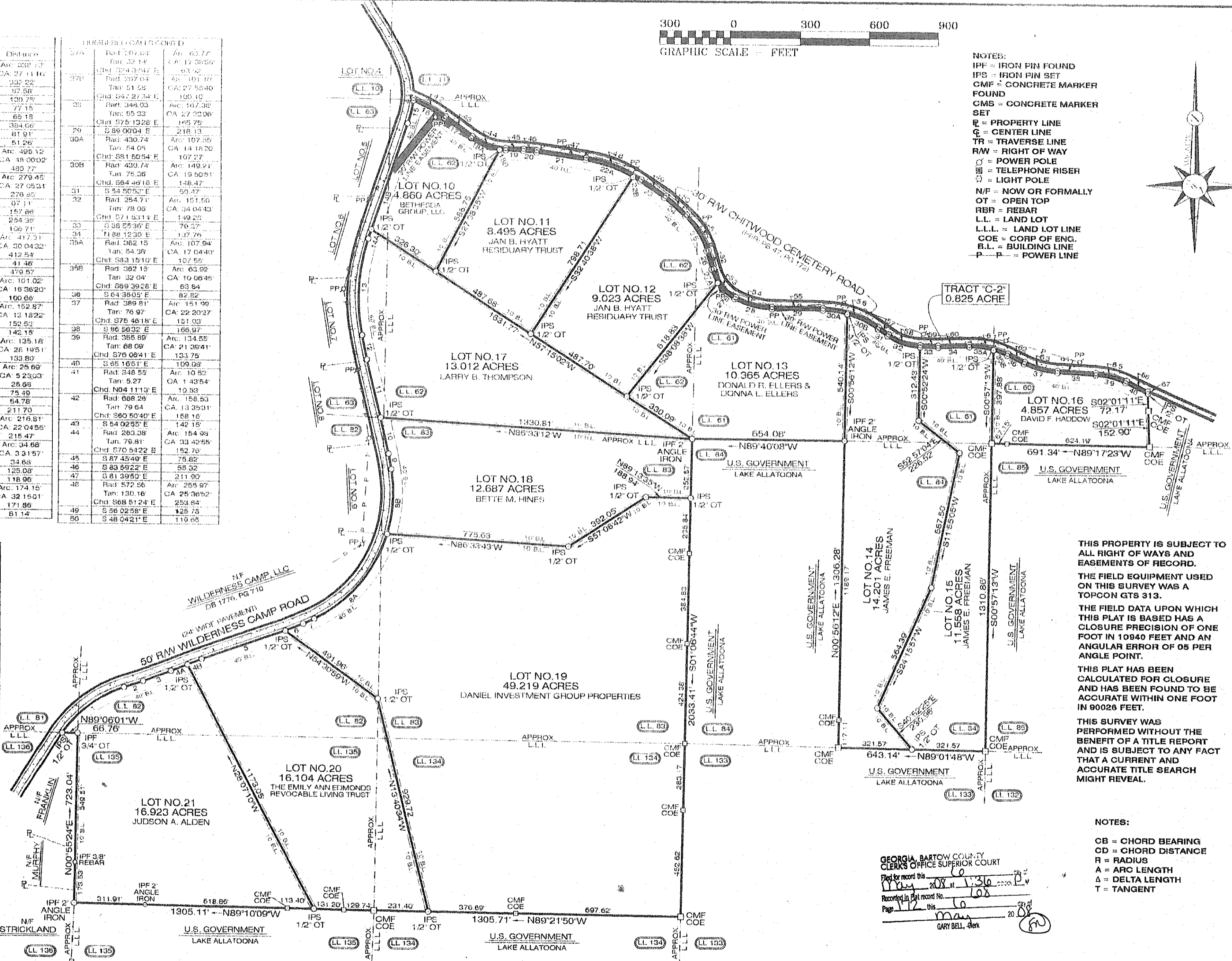




NUMBERED CALLS			NUMBERED CALLS CONT'D		
Course	Bearing	Distance	Course	Bearing	Distance
1	Rad. 500.97'	Arc. 352.12'	37A	Rad. 32.14'	Arc. 17.3855'
	Tan. 175.20'	CA: 27.1116'	37B	Rad. 324.3142'	Arc. 93.42'
	Chd. N89°47'30"E	132.22'		Rad. 207.04'	Arc. 101.17'
2	N 72°23'08"E	95.58'		Rad. 27.58'	CA: 27.5840'
3	N 89°57'55"E	130.75'		Rad. 27.34'	Arc. 100.10'
4A	N 68°47'35"E	77.15'		Rad. 344.03'	Arc. 107.38'
4B	N 68°47'35"E	65.18'		Tan. 55.33'	CA: 27.3206'
5	N 71°07'47"E	384.66'		Chd. S75°13'28"E	145.75'
6	N 68°20'05"E	81.91'	29	S 89°00'04"E	218.13'
7	N 64°49'46"E	51.26'	30A	Rad. 430.74'	Arc. 107.55'
8A	Rad. 591.00'	Arc. 495.12'		Tan. 54.05'	CA: 14.1820'
	Tan. 263.13'	CA: 48.0002'		Chd. S81°50'54"E	107.27'
8B	Rad. 591.00'	Arc. 279.45'	30B	Rad. 430.74'	Arc. 149.21'
	Tan. 142.39'	CA: 27.0531'		Rad. 54.9318'	Arc. 148.47'
	Chd. N00°16'59"E	276.85'	31	S 34°55'52"E	59.47'
9	N 10°15'47"W	67.11'	32	Rad. 254.71'	Arc. 151.50'
10	N 12°49'09"W	157.86'		Tan. 78.09'	CA: 34.0443'
11	N 13°44'45"W	254.38'		Chd. S71°53'14"E	149.25'
12	N 11°35'48"W	106.71'	33	S 86°58'30"E	70.57'
13	Rad. 755.07'	Arc. 417.31'	34	N 88°12'30"E	137.76'
	Tan. 213.55'	CA: 30.0432'	35A	Rad. 582.15'	Arc. 107.94'
	Chd. N03°25'39"E	412.53'		Tan. 54.39'	CA: 17.0440'
14A	N 18°28'45"E	41.46'		Chd. S83°15'10"E	107.55'
14B	N 18°28'45"E	370.57'	35B	Rad. 582.15'	Arc. 63.92'
15	Rad. 348.55'	Arc. 101.02'		Tan. 32.04'	CA: 10.0645'
	Tan. 50.87'	CA: 16.3620'	36	S 64°36'05"E	82.82'
	Chd. N13°21'20"E	100.69'	37	Rad. 389.81'	Arc. 151.99'
16	Rad. 658.26'	Arc. 152.87'		Tan. 76.97'	CA: 22.2027'
	Tan. 76.78'	CA: 13.1822'		Chd. S75°46'18"E	151.03'
	Chd. S60°42'05"E	152.53'	38	S 86°58'32"E	166.97'
17	S 54°02'55"E	142.15'	39	Rad. 355.89'	Arc. 134.55'
18A	Rad. 273.38'	Arc. 135.18'		Tan. 68.09'	CA: 21.3941'
	Tan. 69.06'	CA: 26.1951'	40	Chd. S75°06'41"E	133.75'
18B	Rad. 273.38'	Arc. 25.69'	41	Rad. 348.55'	Arc. 10.82'
	Tan. 12.85'	CA: 5.2303'		Tan. 5.27'	CA: 1.4854'
	Chd. S85°04'17"E	26.68'	42	Chd. N04°11'13"E	13.93'
19	S 87°45'49"E	75.49'		Rad. 688.29'	Arc. 156.53'
20	S 83°59'22"E	54.78'		Tan. 79.64'	CA: 13.2531'
21	S 81°39'50"E	211.70'		Chd. S60°50'40"E	158.15'
22A	Rad. 562.56'	Arc. 216.81'	43	S 54°02'55"E	142.15'
	Tan. 109.77'	CA: 22.0455'	44	Rad. 263.38'	Arc. 154.99'
22B	Rad. 562.56'	Arc. 34.68'		Tan. 79.81'	CA: 33.4255'
	Tan. 17.35'	CA: 3.3157'	45	S 87°45'49"E	75.82'
	Chd. S57°48'56"E	24.68'	46	S 83°59'22"E	55.32'
23	S 56°02'58"E	125.02'	47	S 81°39'50"E	211.90'
24	S 48°04'21"E	118.96'	48	Rad. 572.56'	Arc. 255.97'
25	Rad. 309.39'	Arc. 174.15'		Tan. 130.16'	CA: 25.3652'
	Tan. 89.45'	CA: 32.1501'	49	S 86°02'58"E	125.73'
	Chd. S31°55'50"E	171.95'	50	S 48°04'21"E	119.65'
26	S 15°49'19"E	81.14'			

NUMBERED CALLS CONT'D		
Course	Bearing	Distance
51	Rad. 319.39'	Arc. 179.78'
	Tan. 92.34'	CA: 32.1501'
	Chd. S31°55'50"E	177.42'
52	S 15°49'19"E	81.14'
53	Rad. 197.04'	Arc. 166.91'
	Tan. 82.88'	CA: 46.3735'
	Chd. S38°38'07"E	152.80'
54	Rad. 238.03'	Arc. 162.56'
	Tan. 82.88'	CA: 27.3309'
	Chd. S75°13'29"E	160.99'
55	S 89°00'04"E	218.13'
56	Rad. 440.74'	Arc. 262.72'
	Tan. 135.39'	CA: 34.0911'
	Chd. S71°55'28"E	258.85'
57	S 54°50'52"E	50.47'
58	Rad. 244.71'	Arc. 145.55'
	Tan. 75.00'	CA: 34.0443'
	Chd. S71°53'14"E	143.42'
59	S 88°55'36"E	79.12'
60	N 88°12'30"E	137.51'
61	Rad. 372.16'	Arc. 176.61'
	Tan. 90.00'	CA: 27.1125'
	Chd. S78°11'48"E	174.06'
62	S 64°26'05"E	82.82'
63	Rad. 379.81'	Arc. 146.09'
	Tan. 75.00'	CA: 22.2027'
	Chd. S75°46'18"E	147.10'
64	Rad. 365.89'	Arc. 138.33'
	Tan. 70.00'	CA: 21.3941'
	Chd. S75°06'41"E	137.51'
65	Rad. 365.89'	Arc. 138.33'
	Tan. 70.00'	CA: 21.3941'
	Chd. S75°06'41"E	137.51'
66	S 65°16'51"E	104.04'
67	S 02°01'11"E	11.20'



- NOTES:
 IPF = IRON PIN FOUND
 IPS = IRON PIN SET
 CMF = CONCRETE MARKER FOUND
 CMS = CONCRETE MARKER SET
 R = PROPERTY LINE
 C = CENTER LINE
 TR = TRAVERSE LINE
 R/W = RIGHT OF WAY
 P = POWER POLE
 T = TELEPHONE RISER
 L = LIGHT POLE
 N/F = NOW OR FORMALLY
 OT = OPEN TOP
 RBR = REBAR
 L.L. = LAND LOT
 L.L.L. = LAND LOT LINE
 COE = CORP OF ENG.
 B.L. = BUILDING LINE
 P-P = POWER LINE

THIS PROPERTY IS SUBJECT TO ALL RIGHT OF WAYS AND EASEMENTS OF RECORD.
 THE FIELD EQUIPMENT USED ON THIS SURVEY WAS A TOPCON GT5 313.
 THE FIELD DATA UPON WHICH THIS PLAT IS BASED HAS A CLOSURE PRECISION OF ONE FOOT IN 10940 FEET AND AN ANGULAR ERROR OF 05 PER ANGLE POINT.
 THIS PLAT HAS BEEN CALCULATED FOR CLOSURE AND HAS BEEN FOUND TO BE ACCURATE WITHIN ONE FOOT IN 90026 FEET.
 THIS SURVEY WAS PERFORMED WITHOUT THE BENEFIT OF A TITLE REPORT AND IS SUBJECT TO ANY FACT THAT A CURRENT AND ACCURATE TITLE SEARCH MIGHT REVEAL.

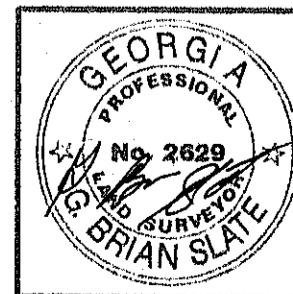
GEORGIA BARTOW COUNTY CLERK'S OFFICE SUPERIOR COURT
 Filed for record this 20th day of April 2008 at 1:36 PM
 Recorded in Plat record No. 108
 Page 172 of this
 GARY BELL, Clerk

- NOTES:
 CB = CHORD BEARING
 CD = CHORD DISTANCE
 R = RADIUS
 A = ARC LENGTH
 Δ = DELTA LENGTH
 T = TANGENT

SURVEYED BY:
 SLATE AND ASSOCIATES, INC.
 G. BRIAN SLATE, FLS#2629
 12610 AUGUSTA ROAD
 LAVONIA, GEORGIA 30553
 706-358-8800

ALL UTILITIES HAVE NOT BEEN LOCATED ON THIS SURVEY. THE PROPERTY IS SUBJECT TO ALL RIGHT OF WAYS AND EASEMENTS OF RECORD.

NOTES:
 THE BUILDING LINE SET BACKS ARE AS FOLLOWS:
 FRONT = 40 FEET
 SIDE = 10 FEET
 REAR = 25 FEET



WILDERNESS CAMP, LLC	
LOT NO.10-21, 172.129 ACRES	REVISIONS:
L.L. 11, 60, 61, 62, 63, 81,	
82, 83, 84, 134, & 135	CC CH
2nd SECT., 21st DIST.	DRAWN BY: GE, BS
BARTOW COUNTY, GEORGIA	CHECKED BY: BS
SURVEYED APRIL 21, 2008	JOB #: 4346
SCALE: 1" = 200'	FILE #:



IN MY OPINION, THIS IS A CORRECT REPRESENTATION OF THE LAND PLATTED AND HAS BEEN PREPARED IN CONFORMITY WITH THE MINIMUM STANDARDS AND REQUIREMENTS OF LAW.

G. Brian Slate
 GEORGIA PROFESSIONAL LAND SURVEYOR, FLS#2629

PLAT REF:
 DB 1776, PG 172
 PB 47, PG 172